



BOOKING INFORMATION

Meeting and event spaces are reserved through our Sales & Events Department. Food and beverages are catered by our onsite restaurant. Minimum food and beverage purchases apply to each room, varying on the size of the room, time of day and day of the week. Each function requires an advance deposit with the balance due upon conclusion of the event. A direct billing option is available for corporate groups with advance arrangements.

Fully equipped rooms for business or social meetings are one of our hotel's highlights.

LCD projectors, tables and chairs, flipcharts, display boards and other materials are available upon request. We offer free wireless Internet access throughout the property.

The hotel's catering department offers special menus for all events, from conferences to wedding receptions and more.

For more information, contact our sales coordinators:

(503) 992-9530 or (877) 992-9530

MEETING ROOM SPECIFICATIONS

Maximum Number of Guests per Set-up Style

	<i>Rounds</i>	<i>Reception</i>	<i>Classroom</i>	<i>Theater</i>	<i>Square</i>
Compass Room	100	150	70	150	68
Alice Inkley Room	40	75	40	60	24
Equinox Room	32	40	20	30	20
Billy Scott Room	32	40	20	30	20
Magic Flute Room	32	40	20	30	20
Rounder Room	32	40	20	30	20
Doctor's Office	NA	60	NA	NA	NA
Bob's Bar	NA	32	NA	NA	NA
Entire Cottage (includes lawn and Cedar Grove)	160	180	NA	NA	NA
Priscillas Room	60	80	60	80	40
Leahs Room	50	50	30	60	24
Paulines Room	50	50	30	60	24
Delia's Garden	200	300	NA	NA	NA
Willow Grove	750	1000	NA	NA	NA
Catchings Grove	56	120	NA	70	NA
Cedar Grove	100	120	NA	100	NA
Hayne's Clearing	150	150	NA	150	NA
Atfalati's Hideaway	NA	60	NA	NA	NA
Yardhouse Pub (available seasonally)	NA	40	NA	NA	NA

Please note that no group is too large to consider.
Speak with a sales coordinator if you have questions about capacity.



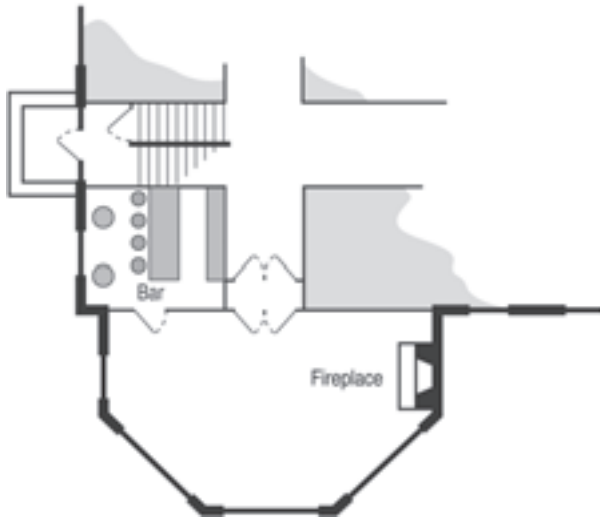
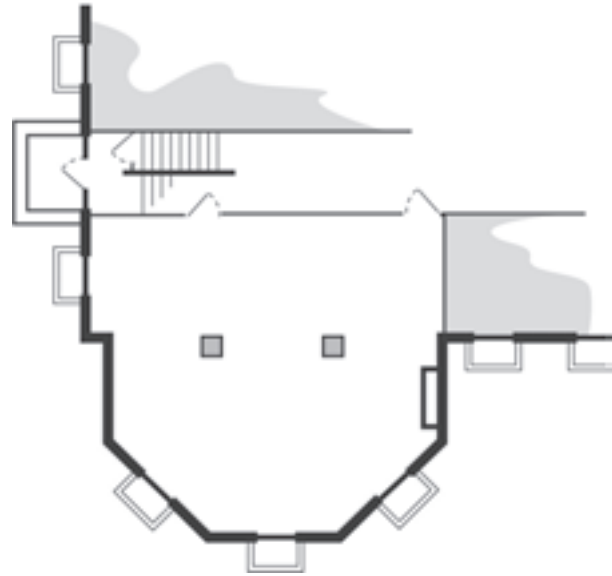


ALICE INKLEY ROOM

(Basement)

This expansive space is one of the Grand Lodge's larger and most versatile meeting rooms. Its size and open floor plan welcome events of all kinds.

Capacity is 40-75 people.



EQUINOX ROOM

(First floor west)

One of the Grand Lodge's original sun parlors, the Equinox Room is a bright space that features a beautiful fireplace, hardwood floors and a full-service bar.

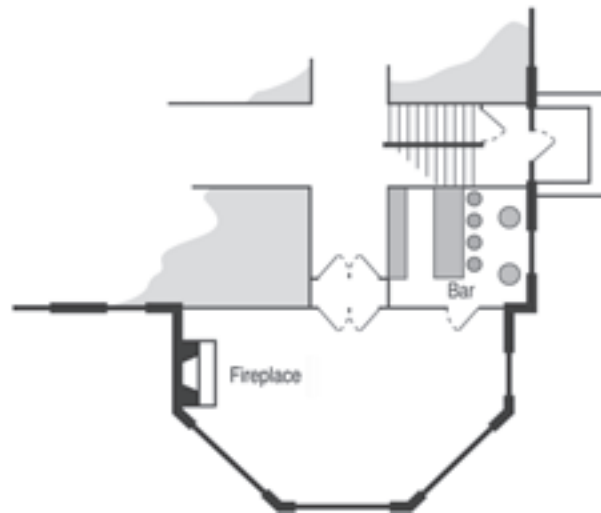
Capacity is 10-40 people.

ROUNDER ROOM

(First floor east)

This spot offers comfortable chairs and couches along with a vintage fireplace and a view of the gardens through the bow window.

Capacity is 10-40 people.



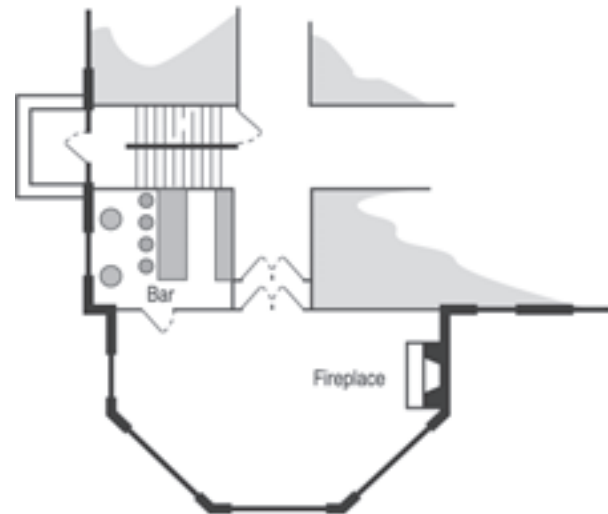


BILLY SCOTT ROOM

(Second floor west)

This sun parlor has the feel of a classic private library, with shelves of books, living room furniture and an original fireplace. An adjoining full-service bar is available.

Capacity is 10-40 people.

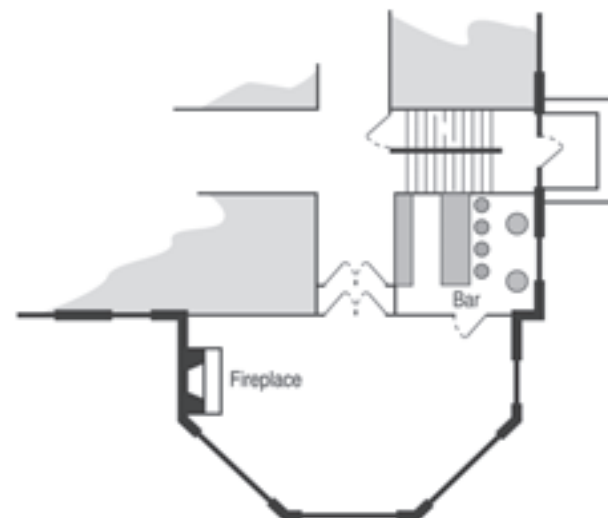


MAGIC FLUTE ROOM

(Second floor east)

Another of the building's original sun parlors, the Magic Flute Room features a vintage fireplace, full-service bar and hardwood floors. Its bank of oversized windows looks out onto the gardens.

Capacity is 10-40 people.





COMPASS ROOM

(Second Floor)

This beautifully appointed, vintage auditorium is a versatile space. With an elevated stage and adjoining Foyer Bar, the Compass Room is a perfect setting for all types of large gatherings, including conferences, holiday celebrations, business parties, wedding receptions, live theatrical productions and concerts.

Capacity is 50-150 people.





CHILDREN'S COTTAGE

The former orphanage holds a variety of welcoming spaces for your event. You can request just one of the rooms for smaller groups or rent the entire Cottage including its lawn and the Cedar Grove for larger groups (*up to 180 people*). The Cottage itself functions well for weddings as there are small side rooms perfect for serving as the bride and groom's dressing areas.



PRISCILLAS ROOM

(First floor)

This is a bright, open space featuring an original fireplace and large windows looking out onto the beautiful grounds.

Capacity is 25-80 people.



LEAHS ROOM

(Second floor)

Groups will find Leahs Room a comfortable meeting place. With an open floor plan and a second-floor view of the gardens, this room is very accommodating.

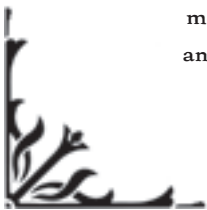
Capacity is 25-50 people.

PAULINES ROOM

(Second floor)

This bright, second-floor space and open floor plan will suit a multitude of meeting and event needs.

Capacity is 25-50 people.





OUTDOOR SPACES

From a sweeping, wide-open lawn surrounded by flowers to a more intimate tree-lined grove with a quaint cottage, the Grand Lodge offers a variety of lovely outdoor spaces for your event. Your guests will enjoy fresh air and beautiful views of the estate. Canopies and tents are highly recommended in case of inclement weather.

Capacity ranges from 120 to 1000 people.

